



Smart Turn™ Delete Kit

Wheelhorse® 5xi Garden Tractors

Part No. 104-5051

Installation Instructions

Loose Parts

Note: Use the chart below to identify parts for assembly.

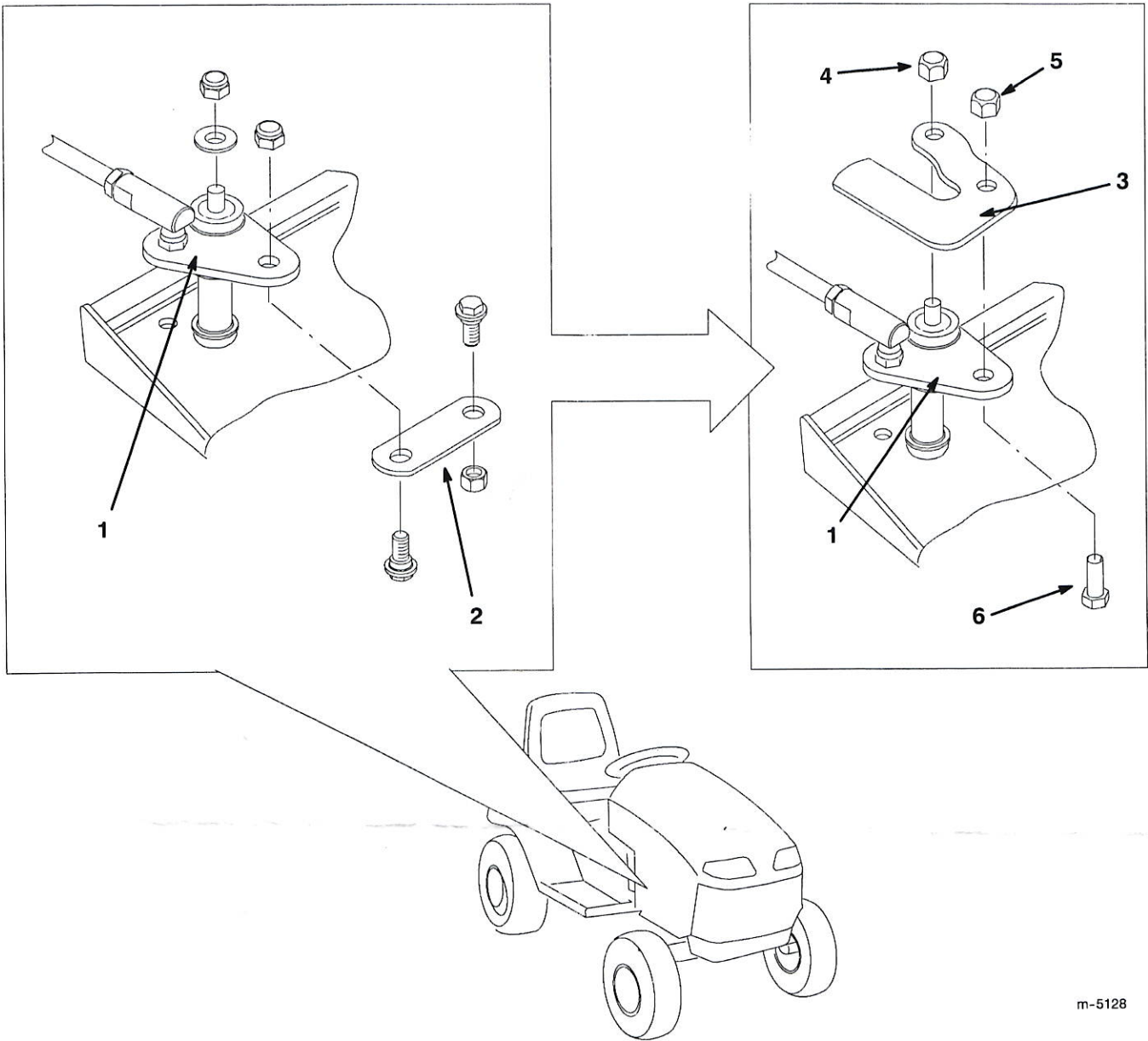
DESCRIPTION	QTY.	USE
Smart Turn delete bracket	1	Installing the kit
Locknut (with nylon insert)	1	
Bolt	1	
Nut	1	

1. Open the hood.
2. Remove the right side panel.
3. Remove the two bolts and nuts securing the slow-down link and remove the link (Fig. 1).
4. Remove the nut and washer securing the slow-down lever but **do not** remove the lever (Fig. 1).
5. Install the Smart Turn delete bracket as illustrated in Figure 1, using the fasteners provided with the kit.
6. Replace the side panel and close the hood.
7. Retain the hardware you removed so you can install the Smart Turn feature at a future time, should a need arise.

Danger

After you install this kit, the tractor will not automatically slow down when turning. Driving with excessive speed while turning can cause you to rollover, resulting in serious injury or death to you or bystanders.

- **When turning, slow down to a safe speed.**
- **Do not operate at high speeds on slopes or uneven terrain.**



m-5128

Figure 1

- | | | | |
|--------------------|------------------------------|--------|---------|
| 1. Slow-down lever | 3. Smart Turn delete bracket | 5. Nut | 6. Bolt |
| 2. Slow-down link | 4. Locknut | | |